



# TB120

STRAIGHT TELESCOPING BOOM/4WD

## PLATFORM

Height.....	120' (36.6 m)
<b>A.</b> Size.....	30" x 96" (76 x 244 cm)
Capacity.....	500 lbs (227 kg)
Construction.....	Aluminum

## MACHINE DIMENSIONS

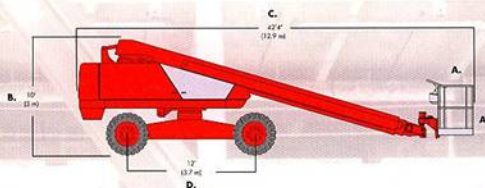
<b>B.</b> Stowed Height.....	10' (3 m)
<b>C.</b> Stowed Length.....	42' 4" (12.9 m)
<b>D.</b> Wheelbase.....	12' (3.7 m)
Width (axles extended).....	12' 10" (3.9 m)
(axles retracted).....	8' 6" (2.6 m)
Weight.....	39,500 lbs (17,917 kg)
Tire Size.....	18 x 22.5 (Foam Filled)

## PERFORMANCE

Horizontal Reach.....	62' (18.9 m)
Power Source.....	Diesel
Fuel Capacity.....	50 gal (189.5 L)
Hydraulic tank cap.....	90 gal (340.7 L)
Drive speed	
Elevated.....	Creep
Stowed.....	3 mph (4.8 kph)
Gradeability.....	25%



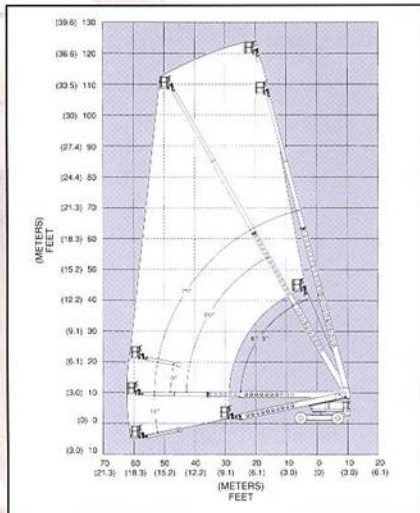
- 360 degree continuous turntable rotation
- Proportional controls
- Printed circuit board with on-board LED diagnostics
- 165 degree hydraulic platform rotation
- 12 volt emergency operated power
- Driveable at full height
- Tilt alarm
- 125 volt GFCI AC outlet
- Aluminum upper booms
- Hour meter
- High engine temp/low oil pressure shut down
- Tie down lug
- Envelope Management system
- 4-wheel drive
- 4-wheel braking
- Extendable rear axles
- Built-in chassis jack
- Electric bleed down valve
- Engine anti-restart
- Oil level/temp gauges
- Lifting lug
- Operator horn



## OPTIONS

- Platform control box cover
- Platform work or drive lights
- Airline to platform
- Flashing light on turntable
- Swinging gate
- Sandblast protection kit
- Tow kit
- Dual fuel or LP gas only
- Cold weather start kit
- Hydraulic system cold weather warm-up kit
- AC generator
- Drive motion alarm

**DANGER:** Models described in this brochure are NON-INSULATED and do not provide electrocution protection from contact with or close proximity to energized conductors which is pointed out on decals and placards attached to the machine. Only qualified and trained operators are to be authorized to use and operate a work platform. Aerial work platforms must be elevated only on firm, level surface. Products in this brochure comply with applicable ANSI Standards. This literature is for illustrative purposes only. Consult Operating Maintenance and Parts Manuals for proper procedures. Specifications may vary and are subject to change without notice or obligation.



# Snorkel

An ISO 9001 Registered Company  
Printed in U.S.A. - TB120 5-03

**Manufacturing Plant**  
2009 Roseport Road  
Elwood, KS 66024  
800-255-0317 Toll Free  
785-989-3000 Office  
785-989-3070 Fax

**Australia**  
26 Redfern Street  
Wetherill Park NSW  
2164 Australia  
(02) 9725 4000 tel  
(02) 9609 3057 fax