

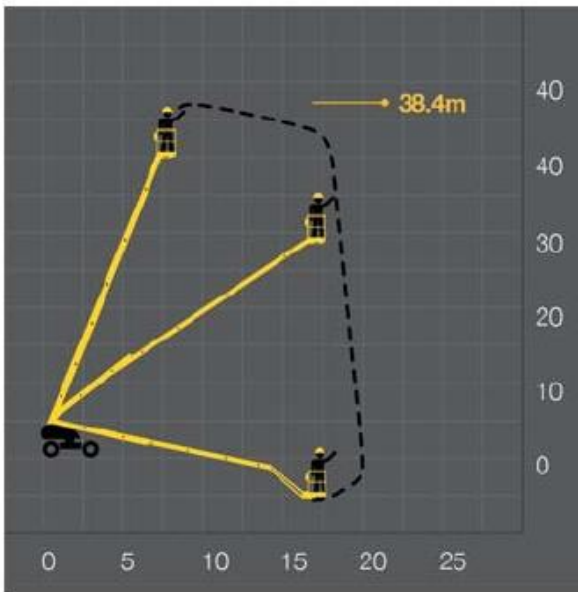


JLG 120HX

The JLG120 improves access to far more areas on site with its 4m articulated boom section. It also includes a high performance telescopic boom lift. This machine has been purposefully designed for a wide variety of demanding maintenance, construction and high reach applications.

STANDARD FEATURES

- Sloped Surface
- Rough Ground
- Level Ground
- Diesel
- Foam filled all terrain tyres
- Noise limited engine
- Extending axles for varied work areas
- Excellent manoeuvrability of machine and platform
- Cage and ground controls
- Outside
- 0.33m ground clearance
- 40% grade ability
- 4 wheel drive and crab steer



SPECIFICATIONS

| | |
|---------------------------|---------------------------------------|
| Platform Height | 120 ft. (36.6m) |
| Working Height | 126 ft. (38.4m) |
| Platform Dimensions-Std. | 36" x 72" x 44" (91m x 1.83m x 1.12m) |
| Platform Capacity | 500 lbs. (227 kg) |
| Stowed Length | 52 ft. 4 in. (15.9m) |
| Stowed Length (transport) | 35 ft. 4 in. 11 (10.9m) |
| Stowed Height | 10 ft. 4 in. (3.15m) |
| Width (axles retracted) | 8 ft. 6 in. (2.59m) |
| Width (axles extended) | 10 ft. 10 in. (3.39m) |
| Tailswing | 34 in. (.86m) |
| Gross Weight (approx.) | 43,500 lbs.* (19750 kg.) |
| Engine | Diesel |
| Travel Speed | 2.75 mph (4.43 km/hr) |
| Gradeability | 40% (22 degrees) |
| Outside Turning Radius | 24 ft. 0 in. (7.32m) |
| Horizontal Reach | 60 ft. 0 in. (18.3m) |
| Tires (Foam Filled) | 445/65R x 22.5 |
| Wheelbase | 11' 4.5 in. (3.47m) |
| Ground Clearance | 12 in. (33cm) |

GIA THÀNH - LEADER OF SALES TEAM

MOBILE : 0933 923 031

EMAIL : p.kinhdoanh2011@gmail.com

WEBSITE : <http://thuexenangnguoiviet.com/>